

## Access CELLS Eduroam with Windows 7:

If you are not ALBA Staff, follow your institution Eduroam instructions. Then ump to (Figure.6).

If you ***belong to ALBA Staff***, to correctly connect from abroad to global Eduroam service, also running on ALBA Synchrotron, you **must install** the ALBA Certificate Authority (CA) for Eduroam in CELLS. Your login and password security relay on this Certificate. Do NOT trust Unknown Certificates, NEVER.

Why? Because once abroad ALBA for a hacker it's easy to install a rogue Wi-Fi hotspot telling the world "I am Eduroam" and getting your login and password if you connect. To avoid get tricked Eduroam uses Certificates, they will **warn you** if someone is cheating your connection. Install this certificate **before** going overseas, so you can easily check if you are really connecting to Eduroam or not.

Remember: In Eduroam use **ALWAYS** secure connections: https / imaps / smtps / VPN.

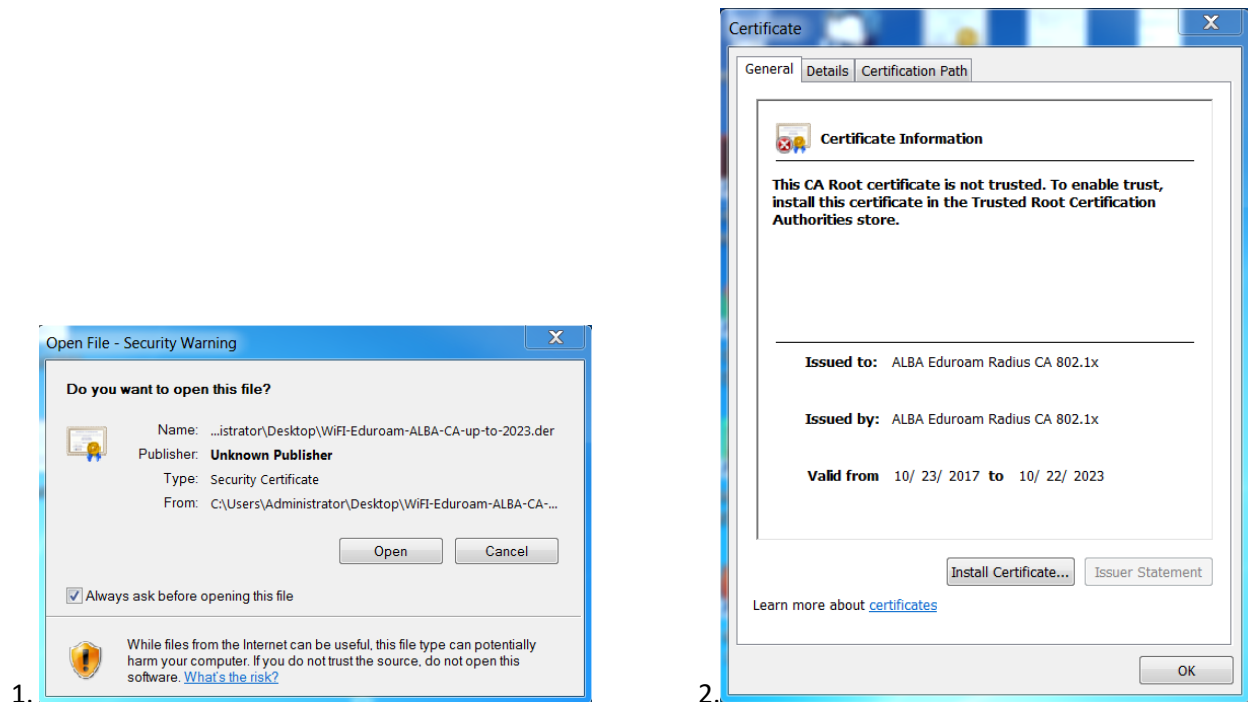
Get ALBA-Eduroam Certificate here (ALBA intranet access needed, from overseas use Citrix+Mozilla ):

<https://www.cells.es/static/WiFi-Eduroam-ALBA-CA-up-to-2029.der>

(sha256sum: d7ac8bccf00770dd95e6b80c946943996c53f21b3cb869e84e54e27c5383ef2b)

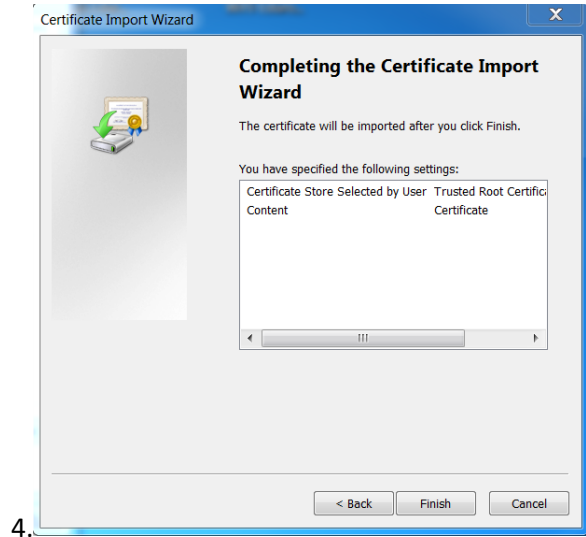
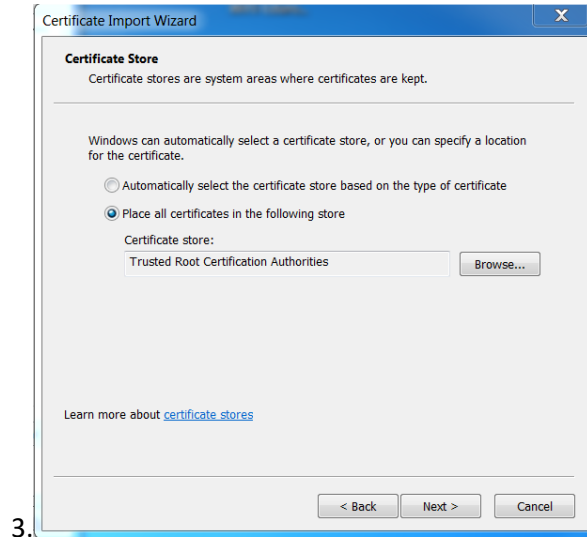
You MUST install it. But how? In Windows is easy, plug and pray.

Once downloaded in your laptop Desktop, double click over it & "open" (Fig.1) the Certificate:

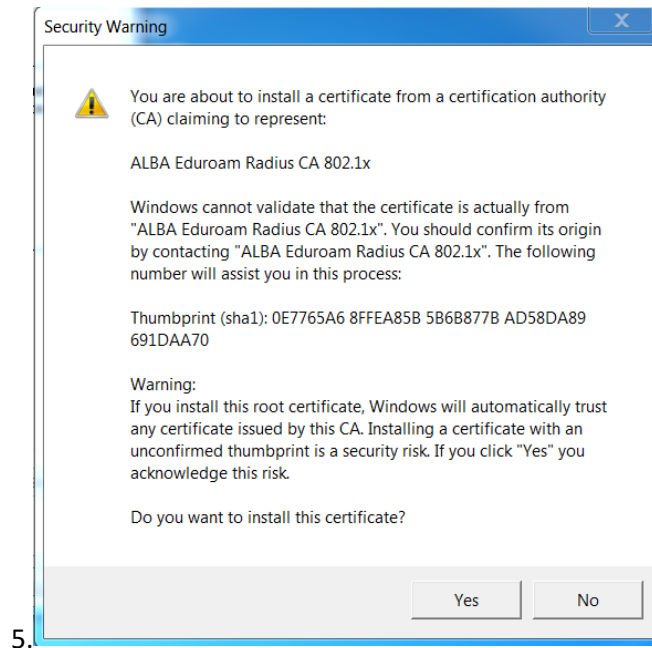


Click on "Install Certificate" (Fig.2) the "ALBA Eduroam Radius CA 802.1x" certificate on the "Trusted Root Certificate Authorities".

Click over (Fig.3) “Place all certificates in the following store”. Use “Browse” and choose “Trusted Root Certificate Authorities”. Next (Fig.3) & Finish(Fig.4).

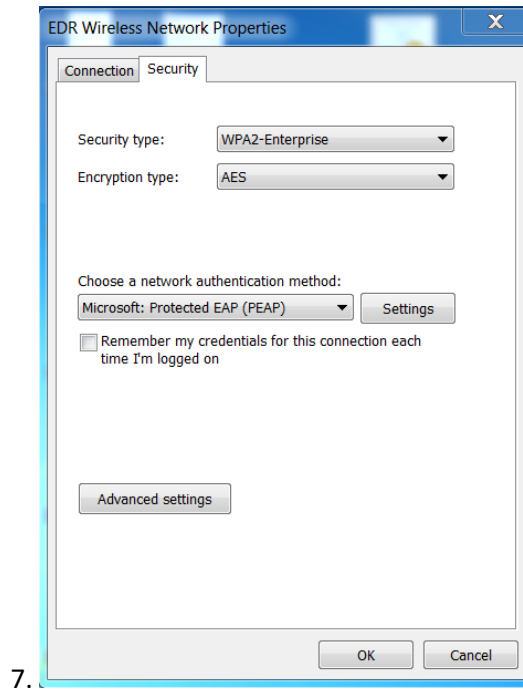
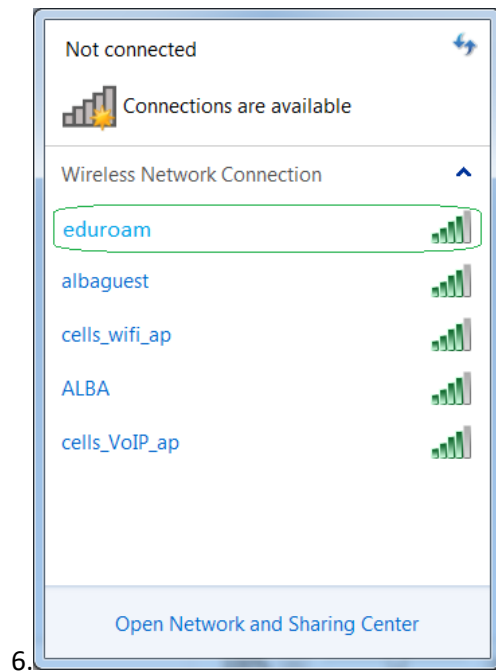


A very (Fig.5) big & alarming security warning shall rise in Windows 7, like this one:

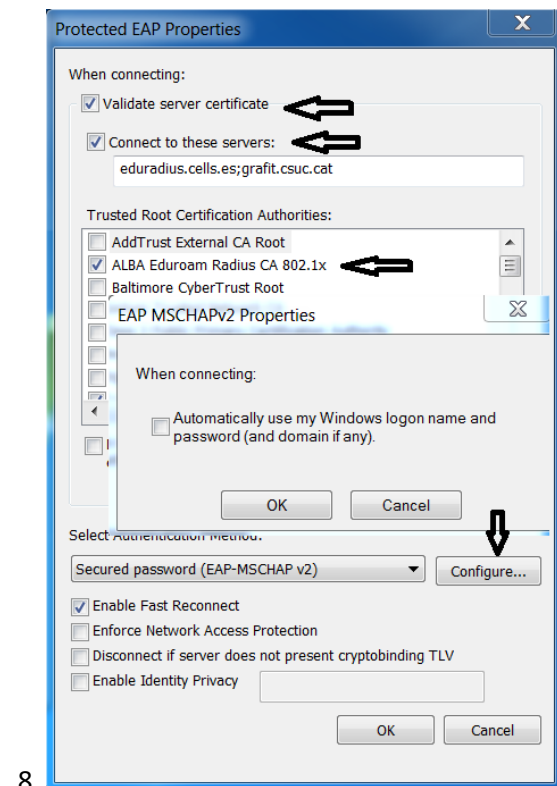


Click “Yes” (Fig.5) and **reboot** the Win7 laptop. Once up again, connect/enable you laptop WiFi. In ALBA you must see a bunch of CELLS WiFis’s, something like (Fig.6) the following left photo.

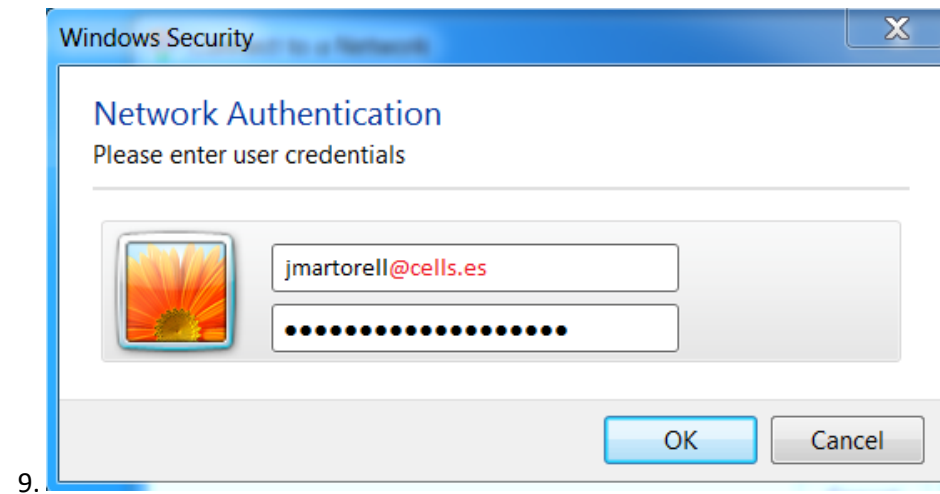
**Right click** (Fig.6) over “eduroam” and choose Properties (Fig.7). If not correctly set, add those fields:



ALBA (Fig.7) uses WPA2-Enterprise, AES, PEAP, MSCHAPv2. Go to Settings(Fig 7). Choose (Fig.8) “Validate server Certificate”, “Connect to these servers” ‘eduradius.cells.es’ and on “Trusted Root Certification Authorities” select the CA we just installed, so “ALBA Eduroam Radius CA 802.1x”.

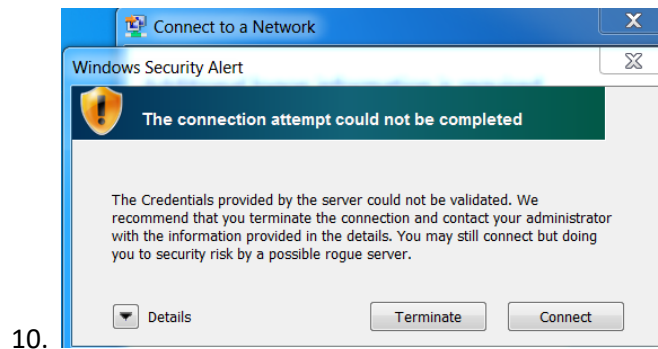


Connect to Wi-Fi “eduroam”(Fig.6). Windows shall ask you (Fig.9) a login & a password. Remember to use your institution **LOGIN@YOUR-DOMAIN**. If you are CELLS staff, then should be like [jmartorell@cells.es](mailto:jmartorell@cells.es). If is not the case may be like [joan.oro@nasa.gov](mailto:joan.oro@nasa.gov) , [curie@esrf.fr](mailto:curie@esrf.fr) , [me@mit.edu](mailto:me@mit.edu) , etc



**Notice** (Fig.9): This seems an e-mail, but it is NOT, I repeat, is your institution LOGIN @ your institution internet domain. **LOGIN @YOUR-DOMAIN**

But it’s possible your Windows7 does not like the certificate yet. If you already rebooted the laptop, once the Certificate is installed, there’s a way to get rid of this (Fig.10) bothering warning:



As user **with administrator rights** you can install the certificate. Open a command line via “cmd”, “cd” to the path where the certificate had been downloaded to, and run:

```
C:> cd "Users\Me\Desktop" or where do you downloaded the "WiFi-Eduroam-ALBA-CA-up-to-2023.der"
```

```
C:\Users\Me\Desktop> certutil -enterprise -addstore NTAAuth WiFi-Eduroam-ALBA-CA-up-to-2023.der
```

Once installed here, you will get rid of the annoying warning.

**IF YOU ARE ABROAD, ALREADY INSTALLED THE ALBA-EDUROAM CERTIFICATE, AND THE WARNING RAISE YOU ARE BEING CHEATED. BE CAREFULL. TERMINATE THE CONNECTION. ASK SYSTEMS.**